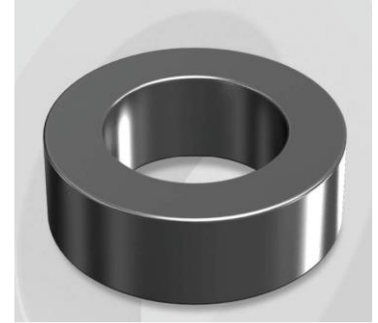


CS234060G14

Electrical Characteristics

Material	Permeability (μ)	AL \pm 8% (nH/N ²)	DCB (% min) @ 50 Oe	Coreloss (mW/cm ³ , max) @50kHz, 1000G
SENDUST	60	80	64.4	320

OD : 234



Core Dimensions

Dimensions		Uncoated		Coated		Color	Packaging
		(mm)	(inch)	(mm)	(inch)		
OD	(Max)	23.57	0.928	24.30	0.957	Black	Box Qty = 450 pcs
ID	(min)	14.40	0.567	13.77	0.542		
HT	(max)	14.00	0.551	15.00	0.591		

Physical Characteristics

Cross Section (A)	Path Length (l)	Window Area (Wa)	Volume (V)	Breakdown Voltage (Vac)
0.611 cm ²	5.88 cm	1.49 cm ²	3.592 cm ³	1,000
0.095 in ²	2.315 in	294,060 cmil	0.219 in ³	

Winding Information

0% Winding length/turn (cm)		
4.015		
40% winding factor Surface Area (m ²)		
32.68		
40% Wound Di.(mm)		
OD	ID	HT
27.76	9.02	18.92

Typical DC Bias Performance

